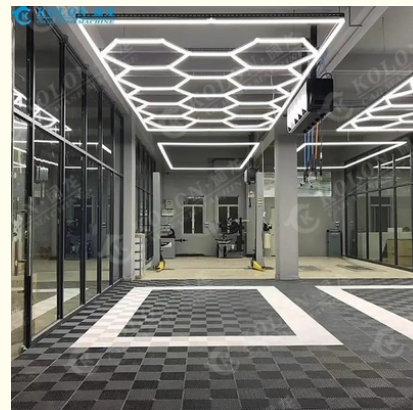


LED Detailing Work Light Tubes For Car Workshop Honeycomb

Our Product Introduction

Basic Information

- Place of Origin: Shanghai, China
- Brand Name: Kolon
- Certification: CE
- Model Number: Led Detailing Work Light Led Tubes for Car Workshop Honeycomb
- Minimum Order Quantity: 1 set
- Price: USD50-USD100
- Packaging Details: canton package
- Delivery Time: 10 days
- Payment Terms: D/P, D/A, L/C, T/T, Western Union, MoneyGram
- Supply Ability: 100000 Set/Sets per Month



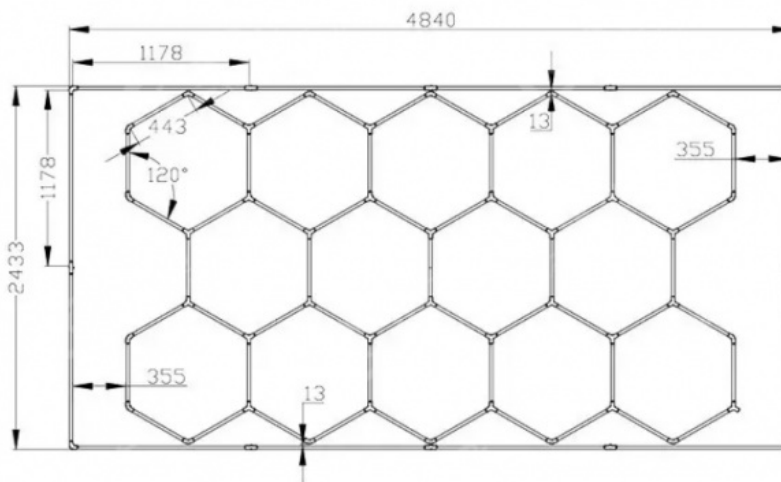
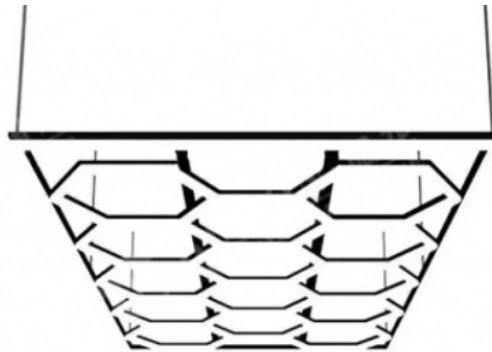
Product Specification

- Product Name: Led Detailing Work Light Led Tubes For Car Workshop Honeycomb
- Brand Name: Kolon
- Color Temperature(CCT): 6500-7000K
- Logo: Customized Logo
- Beam Angle(°): 180
- Input Voltage(V): 110V/220V
- CRI (Ra>): 90
- Lamp Luminous Flux(lm): 110
- Working Lifetime(Hour): 50000
- Color Rendering Index(Ra): 80
- Working Temperature(): -25-45
- Power Supply: AC
- Lighting Solutions Service: Lighting And Circuitry Design, DIALux Evo Layout



for more products please visit us on automaticcarwashing.com

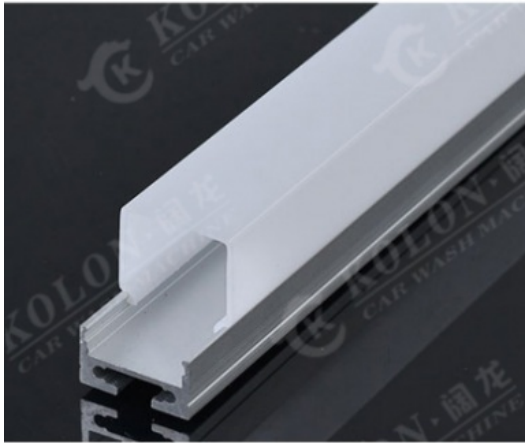
Supply Honeycomb and Hexagon Detailing Lights Car Detailing Lights led wall lights



Aluminum alloy Shell,long service life

Special designed for car wash,detailing,rustless,high luminance LED light



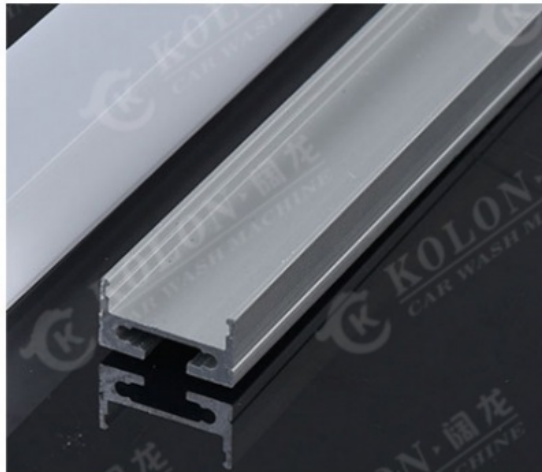


Euphotic PC cover

Waterproof, anticorrosive

High quality cooling aluminum

Rustless
Long service life



Installation:

- 1.First assemble on the ground. After the power-on test is completed, use a plastic card link.
- 2.If your ceiling is a grille, you can bind the assembled lamp directly to the grille.
- 3.If your ceiling is flat, please install iron buckle on the ceiling, then fix it with screws.
- 4.The installation instructions file will be sent together with the goods. Most of the installation processes are about the assemblies, and all the screws are marked.
- 5.You need to wire the lamp with the transformers box. The professional wireman is suggested to finish the wire arrangement.

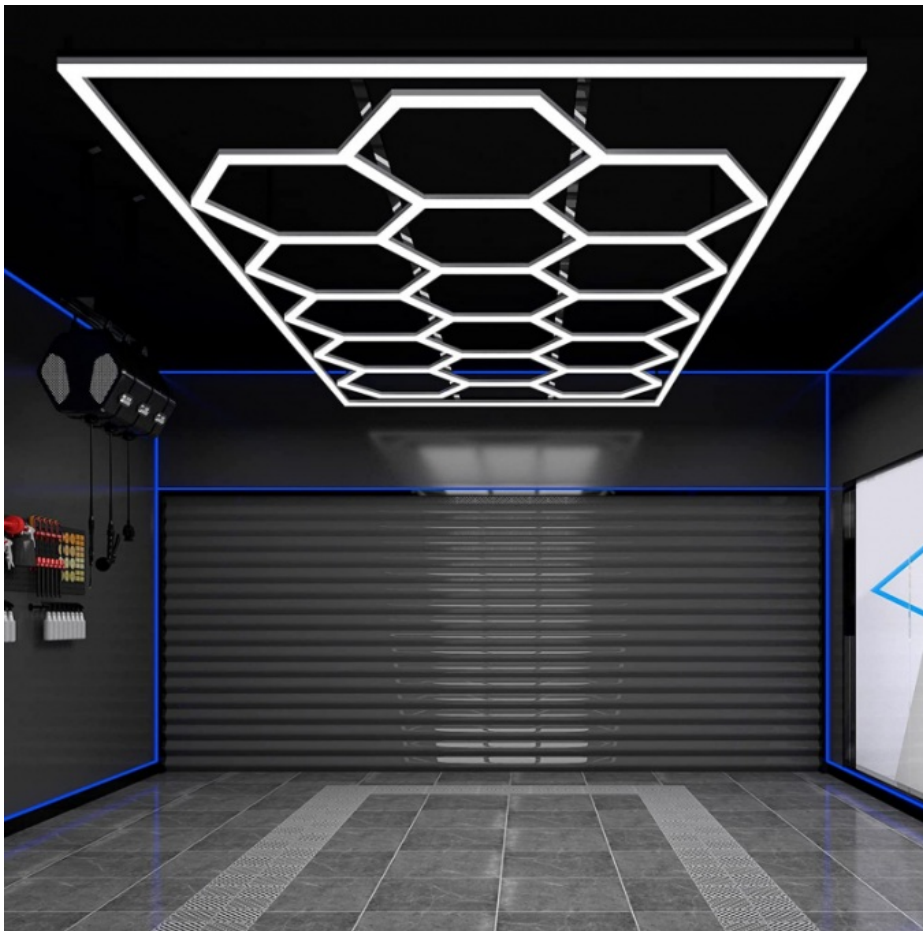
Packaging & delivery

Led light for car wash

Quantity(sets)	1-20	21-100	101-500	>500
Lead time (days)	3	5	15	be negotiated

Products Show:





Q&A:

Q:What is the dimension of a standard size LED light?

A: Size of a standard LED light: 2.4x4.8m,14 honeycombs,good for one parking spot.

Q:How can you solve the issue of different voltage standard in every country?

A: There are 220V and 110V standard LED light alternative.

Q:Can you accept customized design?

A: Yes,customized design is available.

Q:Do you have MOQ?

A: No MOQ,We have goods in stock.

Q: When will you ship out the cargoes?

A: All packages will be shipped out in 3-5 working days.

Q:How to install the LED lights?

A: Every package comes with an installation instructions,easy and fast for installation by yourself.

Q:What mode of transportation do you use and how long does it take?

A: We ship the goods by express,air,sea. Every mode is available.Please check the shipping information with sales,if you want to know transport time exactly.

Q:How about the service after sale?

A: We will provide free replacement service(Freight is free too) if there is quality issueduring the warranty.

Q: How to contact you?

A:Whatsapp/Mb.: +86-18964350873 Email: zoe@koloncarwashing.com ; +86-17765180874(WhatsApp, Wechat)
cici@koloncarwashing.com



Shanghai Kuolong Cleaning Machinery Co. Ltd.

+86-17765180874

cici@koloncarwashing.com

automaticcarwashing.com

1778 Huateng Road, Qingpu District, Shanghai, 201708,China