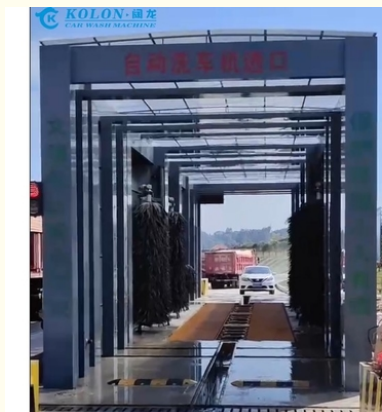


Kolon engineering truck & bus brushes washing machine / truck wash equipment

Our Product Introduction

Basic Information

- Place of Origin: Shanghai, China
- Brand Name: Kolon
- Certification: CE
- Model Number: KL-EBUS
- Minimum Order Quantity: 1 unit
- Price: USD28300
- Packaging Details: plywood case
- Delivery Time: 20 days
- Payment Terms: D/P, D/A, L/C, T/T, Western Union, MoneyGram
- Supply Ability: 1000unit per year



Product Specification

- Product Name: Rollover Bus Washing Machine/drive Through Bus Wash Machine
- Dimensions (length * Width * Height): 4.5*4.5*5.5M
- Foundation (length * Width * Height): 9*7*5.5M
- Material: Import Components, Hot-dip Galvanized Frame
- Application: Bus Body Cleaning, Bus Washer / Automatic Bus Washing Machine, Van, commercial Vehicle
- Cleaning Speed: 2-3min/car adjustable
- Wire Requirements: Three-phase Four Wire
- Power Requirement: 380v/50Kw
- Power: 19kw
- Max Washing Height: 2.1M
- Max Washing Width: 2.3M

for more products please visit us on automaticcarwashing.com

Product Description

Kolon engineering truck & bus touchless washing machine

An automatic bus washing machine , also known as a gantry-style or gantry-type bus wash machine, offers several advantages over other types of bus washing systems.

Convenience: One of the biggest advantages of a drive-through automatic bus washing machine is its convenience. Buses can be washed without the need for them to stop or park. The drive-through design allows buses to pass through the machine while in motion, saving time and minimizing disruptions to the bus schedule.

Efficiency: Drive-through automatic bus washing machines are designed for efficient cleaning. The machine is equipped with high-pressure water jets, rotating brushes, and detergent application systems that work together to effectively remove dirt, grime, and road film from the bus's exterior. The automated process ensures a thorough and consistent cleaning result.

Time-Saving: With a drive-through automatic bus washing machine, the cleaning process is quick and efficient. Buses can be washed in a matter of minutes, allowing for faster turnaround times and increased productivity. This is particularly beneficial for bus fleets that require frequent cleaning or have tight schedules.

Versatility: Drive-through automatic bus washing machines are designed to accommodate different bus sizes and configurations. They can handle various types of buses, including standard buses, articulated buses, and even double-decker buses. The adjustable settings and customizable programs allow for flexibility in cleaning different bus designs.

Reduced Labor: The drive-through automatic bus washing machine eliminates the need for manual labor in the cleaning process. Once the bus is positioned correctly, the machine takes over the cleaning process, reducing the reliance on human operators. This not only saves labor costs but also ensures consistent cleaning results.

Enhanced Safety Features: Drive-through automatic bus washing machines often come equipped with safety features to protect both the bus and the machine itself. These features can include sensors to detect the bus's position, automatic shut-off mechanisms in case of emergencies, and safety interlocks to prevent accidents or damage during the cleaning process.

Water and Chemical Efficiency: Many drive-through automatic bus washing machines are designed to be water and chemical efficient. They utilize advanced technologies such as high-pressure water jets, precise nozzle control, and optimized water and detergent distribution systems. This helps minimize water and chemical waste, making the cleaning process more environmentally friendly and cost-effective.

Packaging & Delivery



FAQ

Q: Are you car wash machine trader or manufacturer?

A: Yes, we are the car wash machines manufacturer in china. Our brand is Kolonwash. So we have the competitive price, and could provide the spare parts at any time.

Q: What types car wash machines can you produce?

A: We can produce the rollover car wash machine, tunnel car wash machine, touchless car wash machine. Besides, could be customized according to your request.

Q: Can the color and appearance be customized?

A: Yes, of course, they could be customized, just tell me what color you need, and the drawing of the appearance, we could do according to your request.

Q: Can I put my brand name on machine instead of your brand name?

A: Yes, we could stick your brand name on the machines according to your request.

Q: What is the delivery time?

A: Our lead time is 10-15 days once get the advanced payment , according to which type you need.

Q: What about the foundation? How long will it take?

A: We could provide the drawing of the foundation, it needs around 5 days.

Q: How to install the machine? And how to do daily maintenance?

A: We could provide the installation drawing and guided installation video. We could provide the maintenance manual to you.

Q: How about the warranty time and sales-after service?

A: Our machine warranty time: 3 years (50000 times), in warranty time, if the machine have any question, we could provide the parts free of charge.

Q: How to contact you?

A:Whatsapp/Mb.: +86-18964350873 Email: zoe@koloncarwashing.com ; +86-17765180874(WhatsApp, Wechat)
cici@koloncarwashing.com



Shanghai Kuolong Cleaning Machinery Co. Ltd.



+86-17765180874



cici@koloncarwashing.com



automaticcarwashing.com

1778 Huateng Road, Qingpu District, Shanghai, 201708,China