

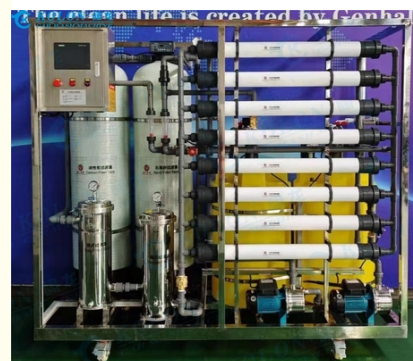
Kolon 6 steps process water system State of the Art Stainless Steel Waste Water Treatment System

Our Product Introduction

For more products please visit us on automaticcarwashing.com

Basic Information

- Place of Origin: Shanghai, China
- Brand Name: KOLON
- Model Number: YPE-7

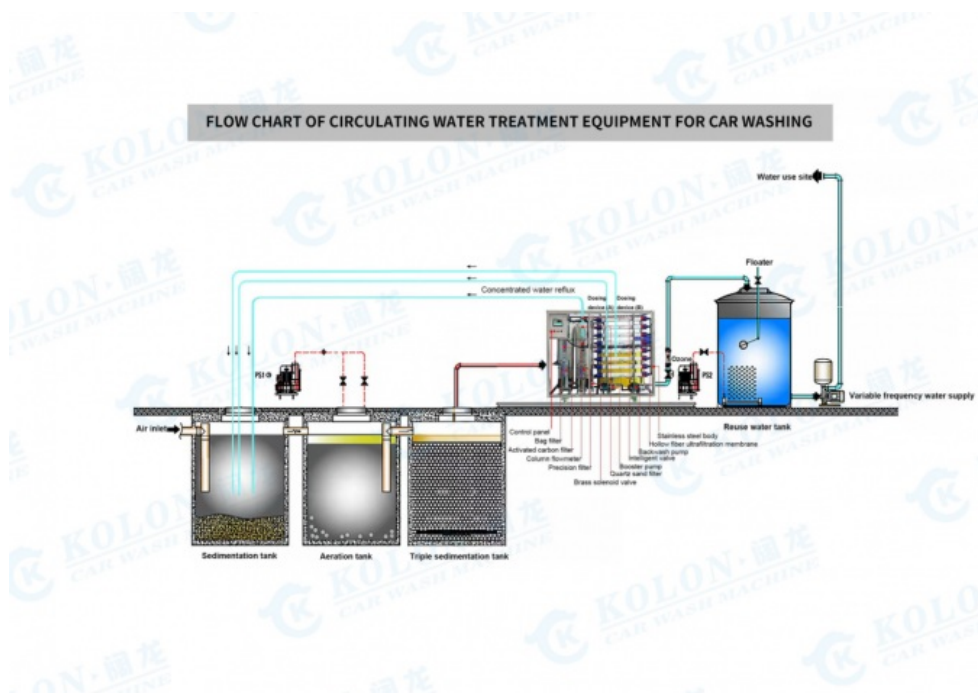


Product Specification

- Capacity: 5000 M3/day
- Machinery Test Report: Provided
- Treatment Process: Physical, Chemical, And Biological Treatment
- Warranty: 1 Year
- Feature: Save Money, Reduce Environmental Impact
- Maintenance: Easy To Maintain And Operate
- Treatment Stage: Primary, Secondary, And Tertiary Treatment
- Design Pressure: $\leq 0.6\text{Mpa}$
- Highlight: **Stainless Steel Waste Water Treatment System, Kolon Waste Water Treatment System**

Product Description

Kolon 6 steps process water system State of the Art Stainless Steel Waste Water Treatment System



Product Description:

The system is suitable for installation both indoors and outdoors, making it a versatile solution for different setups. The treatment process is a combination of physical, chemical, and biological treatment that ensures the elimination of harmful pollutants from wastewater. The system is made of high-quality stainless steel material that is durable and long-lasting. The material is resistant to corrosion and can withstand harsh environmental conditions, making it ideal for outdoor installations.

The treatment stage is divided into three parts: primary, secondary, and tertiary treatment. In the primary treatment stage, the wastewater is screened to remove large solids and suspended particles. The secondary treatment stage involves the use of biological processes to break down organic matter and remove nutrients such as nitrogen and phosphorus. The tertiary treatment stage is the final stage, which involves the use of advanced filtration techniques to remove any remaining impurities.

The Waste Water Treatment System is a reliable and efficient solution for treating domestic and industrial wastewater. It is designed to meet the highest standards of water treatment and is suitable for use in a wide range of applications. With its advanced technology and durable construction, this system is an investment that will provide long-term benefits for any organization.

Features:

Product Name: Waste Water Treatment System

Operating Temperature: 5-40

Feature: Save Money, Reduce Environmental Impact

Material: Stainless Steel

Treatment Process: Physical, Chemical, And Biological Treatment

Maintenance: Easy To Maintain And Operate

Also known as: Wastewater Filtration System, Water Reclamation System, Domestic Sewage Purification Plant

Technical Parameters:

Operating Temperature	5-40
Discharge Standard	Complies With Local Environmental Regulations
Design Pressure	≤0.6Mpa
Treatment Process	Physical, Chemical, And Biological Treatment
Maintenance	Easy To Maintain And Operate
Capacity	5000 M3/day
Feature	Save Money, Reduce Environmental Impact
Application	Industrial Waste Water Treatment

Treatment Stage	Primary, Secondary, And Tertiary Treatment
Core Components	Motor,PLC

Applications:

The YPE-4 model is equipped with a powerful motor and programmable logic controller (PLC) as core components, ensuring efficient and reliable operation. Additionally, our machinery test report proves the quality of our product, ensuring that it will perform optimally for years to come.

One of the key features of the YPE-4 is its ability to save money while reducing environmental impact. By complying with local environmental regulations, this product ensures that wastewater is treated properly and does not harm the environment. This makes it an ideal choice for various industrial applications where sustainability is key.

With its versatility, the YPE-4 can be used in a variety of settings, including but not limited to, factories, food processing plants, and other industrial settings, where wastewater treatment is necessary. Its compact design also ensures that it can fit into tight spaces, making it an ideal choice for plants with limited space.

Overall, the KOLON YPE-4 Waste Water Treatment System is an essential product for those who are serious about protecting the environment while also maintaining cost efficiency. Its ability to comply with local environmental regulations ensures that it is a highly reliable and effective solution for various industrial settings.

Customization:

Customize your KOLON YPE-4 waste water treatment system with our product customization services. Our system is made of high-quality stainless steel and manufactured in Shanghai, China.

With our customization services, you can choose to save money and reduce your environmental impact with our physical, chemical, and biological treatment process. Our system offers primary, secondary, and tertiary treatment stages to ensure that your wastewater is properly treated.

Our installation options include indoor or outdoor installations to fit your specific needs. Whether you need a biochemical sewage treatment facility, chemical wastewater treatment installation, or a sewage treatment plant, our customization services can provide the solution you need.

Support and Services:

The Waste Water Treatment System product comes with technical support and services to ensure optimal performance and longevity. Our team of experts is available to assist with:

Installation and setup

System maintenance and troubleshooting

Performance optimization

Replacement parts and upgrades

Training and education

Our technical support and services are designed to minimize downtime and maximize efficiency for your waste water treatment system.

Contact us for more information on how we can support your needs.

Packing and Shipping:

Product Packaging:

The waste water treatment system will be securely packed in a cardboard box for protection during shipment.

All necessary parts and accessories will be included.

An instruction manual will be provided to assist with assembly and installation.

Shipping:

Shipping will be handled by our trusted carrier partners.

Shipping charges will be calculated based on the destination and weight of the package.

Customers will receive a tracking number once the package is shipped.

Please allow 5-7 business days for delivery, depending on location.

FAQ:

Q: What is the brand name of this waste water treatment system?

A: The brand name of this waste water treatment system is **KOLON**.

Q: What is the model number of this waste water treatment system?

A: The model number of this waste water treatment system is **YPE-4**.

Q: Where is this waste water treatment system made?

A: This waste water treatment system is made in **Shanghai, China**.

Q: What is the capacity of this waste water treatment system?

A: The capacity of this waste water treatment system is **4 cubic meters per hour**.

Q: What kind of waste water can this treatment system handle?

A: This waste water treatment system can handle various types of waste water, including industrial, municipal, and agricultural waste water.

 +86-17765180874  cici@koloncarwashing.com  automaticcarwashing.com

1778 Huateng Road, Qingpu District, Shanghai, 201708, China