

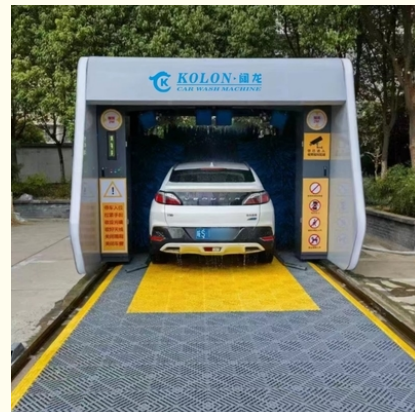
5-Brush Gantry Heavy Duty Stainless Steel Rollover Car Wash Machine vehicle

Our Product Introduction

For more products please visit us on automaticcarwashing.com

Basic Information

- Place of Origin: Shanghai, China
- Brand Name: KOLON
- Model Number: KL-5VF



Product Specification

- Features: Foam Spraying, Wheel Brushing, Undercarriage Washing
- Water Consumption: 100-150L Per Car
- Size: Standard
- Machine Size: 3.5m(L)*2.2m(W)*2.9m(H)
- Air Pressure: 2-5 BAR
- Brush Quantity: 5
- Drying Method: Hot Air Blower
- Material: Stainless Steel
- Highlight: **Heavy Duty Rollover Car Wash Machine,
Stainless Steel Rollover Car Wash Machine,
5-Brush Rollover Car Wash Machine**

Product Description

Product Description:

Made from high-quality stainless steel, this car wash machine is durable, corrosion-resistant, and built to last. It can withstand the wear and tear of frequent use, making it an ideal investment for your garage car wash business or personal use.

The Rollover Car Wash Machine features a water spraying washing system that ensures a thorough clean for your vehicle. With its powerful water jets, the machine can blast away dirt, grime, and other contaminants from your car's surface, leaving it looking as good as new.

In addition to its water spraying system, the Rollover Car Wash Machine also comes equipped with a hot air blower drying method. This feature ensures that your car is dried quickly and efficiently, preventing water spots and streaks from forming on its surface.

At standard size, this car wash machine is suitable for most types of vehicles, including sedans, SUVs, and trucks. Its compact design and easy-to-use controls make it an ideal choice for home garages and small businesses.

Whether you're a car enthusiast, a professional car washer, or just looking for an efficient and reliable way to wash your car at home, the Rollover Car Wash Machine is the perfect solution. Its advanced features, durable construction, and ease of use make it an unbeatable choice for anyone looking to keep their vehicle looking its best.

Features:

Product Name: Rollover Car Wash Machine

Size: Standard

Drying Method: Hot Air Blower

Power Requirement: 380v/20.5Kw

Machine Size: 3.5m(L)*2.2m(W)*2.9m(H)

Features:

Foam Spraying

Wheel Brushing

Undercarriage Washing

This Rollover Car Wash Machine is a great addition to your Vehicle Washing System. It is a reliable and efficient Car Washer that comes with Foam Spraying, Wheel Brushing, and Undercarriage Washing features. Its Hot Air Blower Drying Method and 380v/20.5Kw Power Requirement make it a powerful machine that can handle any job. The machine size is 3.5m(L)*2.2m(W)*2.9m(H), making it a standard size that fits most car wash facilities.

Technical Parameters:

Material	Stainless Steel
Features	Foam Spraying, Wheel Brushing, Undercarriage Washing
Size	Standard
Frequency	50Hz
Air Pressure	2-5 BAR
Drying Method	Hot Air Blower
Warranty	3 Year
Power Requirement	380v/20.5Kw
Water Consumption	100-150L Per Car
Usage	Garage Car Wash

Applications:

The KL-5VF Rollover Car Wash Machine is suitable for use in different locations, including car wash centers, service stations, car dealerships, and other car-related businesses. Car owners can also benefit from this car cleaning equipment by using it to maintain the cleanliness of their vehicles at home.

This car washer is equipped with a water spraying washing system that ensures the removal of dirt, grime, and other contaminants from the car's surface. The KL-5VF Rollover Car Wash Machine operates at a frequency of 50Hz, making it ideal for use in different countries with varying voltage requirements. The air pressure required for this car cleaning equipment is 2-5 BAR, which is enough to provide a powerful cleaning force without damaging the car's paint or surface.

The KL-5VF Rollover Car Wash Machine requires a power supply of 380v/20.5Kw, which is sufficient to power the water spraying system and the brushes. The car washer is easy to operate, and the car's movement is automated, making it easy for users to clean their cars without worrying about the technicalities of the process.

The KL-5VF Rollover Car Wash Machine is perfect for different car cleaning scenarios, including routine car cleaning, pre-sale cleaning, and post-repair cleaning. This car cleaning equipment is also ideal for cleaning cars of different sizes and shapes, including sedans, SUVs, and trucks. The KL-5VF Rollover Car Wash Machine provides a fast and efficient cleaning process that saves time and effort while ensuring that the car is thoroughly cleaned.

Customization:

Our customization services include:

Foam Spraying

Wheel Brushing

Undercarriage Washing

Trust KOLON, a brand known for producing high-quality Car Washers, to provide you with the best product possible. Our KL-5VF Automatic Car Washing Machine is made in Shanghai, China and is designed to meet the demands of any car wash business.

Support and Services:

The Rollover Car Wash Machine is a sophisticated piece of equipment that requires specialized technical support and services. Our team of expert technicians is available to assist you with any issues you may encounter during the installation, operation, and maintenance of your car wash machine.

We offer a range of technical support services, including:

Installation support

Operation training

Maintenance and repair services

24/7 remote support

In addition, we offer a variety of service agreements to ensure that your car wash machine is always running at its best. Our service agreements include regular maintenance visits, discounted parts and labor, and priority service.

For more information about our technical support and services, please contact us.

Packing and Shipping:

Product Packaging:

1 Rollover Car Wash Machine

1 User Manual

1 Set of Installation Tools

Shipping:

Shipping Method: Ground Shipping

Estimated Delivery Time: 3-5 business days

Shipping Cost: Free

FAQ:

Q: What is the brand name of this car wash machine?

A: The brand name of this car wash machine is KOLON.

Q: What is the model number of this car wash machine?

A: The model number of this car wash machine is KL-5VF.

Q: Where is this car wash machine manufactured?

A: This car wash machine is manufactured in Shanghai, China.

Q: What type of car can be washed with this machine?

A: This machine is designed to wash cars of various sizes, including sedans, SUVs, and pickup trucks.

Q: Does this machine come with a warranty?

A: Please refer to the warranty information provided by the manufacturer for details on the warranty coverage of this product.



Shanghai Kuolong Cleaning Machinery Co. Ltd.



+86-17765180874



cici@koloncarwashing.com



automaticcarwashing.com

1778 Huateng Road, Qingpu District, Shanghai, 201708, China