

Kolon Hot Dip Galvanized Steel Frame for Durability and Corrosion Resistance in the Full Automatic Roll-Over Car Wash Machine

Our Product Introduction

for more products please visit us on automaticcarwashing.com

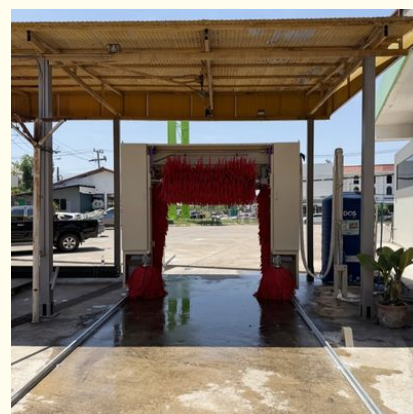
Basic Information

- Place of Origin: Shanghai, China
- Brand Name: Kolon
- Certification: CE
- Model Number: KL-5VF
- Minimum Order Quantity: 1 unit
- Price: USD13525-USD17525
- Packaging Details: plywood case
- Delivery Time: 20 days
- Payment Terms: D/P, D/A, L/C, T/T, Western Union, MoneyGram
- Supply Ability: 1000unit per year

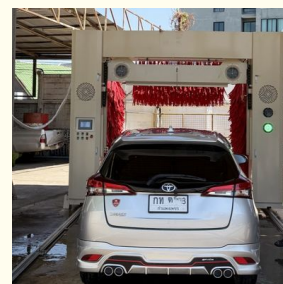
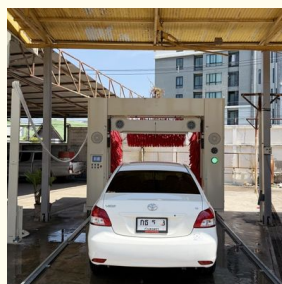
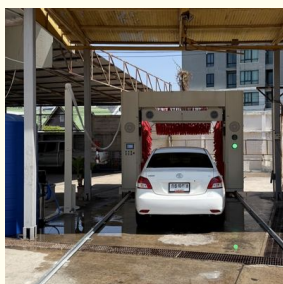
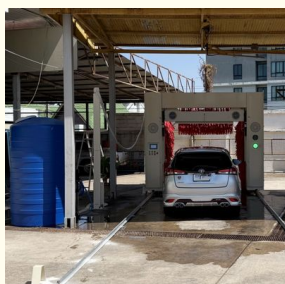


Product Specification

- Product Name: Rollover Car Washing Machine/drive Through Car Wash Machine
- Dimensions (length * Width * Height): 3.5*2.2*2.9M
- Foundation (length * Width * Height): 110*3.7*3.2M
- Material: Import Components, Hot-dip Galvanized Frame
- Application: Car Body Cleaning, Car Washer / Automatic Car Washing Machine, Van, commercial Vehicle
- Function: Spray Foam, Clean By Foam And Air, Car Washer / Touchless Automatic Car Washing Machine
- Cleaning Speed: 2-3min/car
- Air Pressure: 2-5 BAR
- Wire Requirements: Three-phase Four Wire 18KW
- Power Requirement: 280v/20.5KW



More Images



Product Description

Full Automatic Roll-Over 5 brushes car washing machine blower fixed for Car

Model: [KL-5VF](#)

Automatic Car Washing Machine Description :

The KL-5VF car wash equipment features high-pressure water system and can clean deep stains to meet different customer requirements. This soft touch car wash machine utilizes soft brushes, which can quickly rotate and move in various directions to remove contaminations on the surface during operation.

Automatic Car Washing Machine Features :

- ◆ The welding-free frame is made of hot dip galvanized steel which makes it quite durable and corrosion resistant.
- ◆ The machine is with 5 brushes. 1 top brush, 2 side brushes and 2 wheel brushes that can wash the car completely.
- ◆ This machine is equipped with 4 drying motors that can ensure drying effect.
- ◆ The combination of automobile detergent and brush washing could remove the contamination on the surface more effectively. Hydrophobic Wax improves drying effect.
- ◆ Detergent application: Specialized detergents are applied to help break down and remove tough stains and grime.

Specification:

Warranty	3 years, man-made damage excluded
Machine Size	3.5*2.2*2.9M(L*W*H)
Foundation Size:	110*3.7*3.2M(L*W*H)
Site Requirements	Ground hardening
Proportioning machine size	integrating with the machine
Wire requirements	three-phase four wire 18KW
Air pressure	2-5 BAR
Max washing height	2000mm
Max washing width	2200mm
Max washing length	5500mm
Power needed	380V/20.5KW
Running power	Air-dry power 12KW(4PCS*3KW) Siemens motor Cleaning working power: 8.5kw
Water Consumption	80-100L/car
Washing Time	3-5mins/car
Power Consumption	0.5-1kwh/car
Machine weight	2400Kg/18.5CMB
Total Power	380V/20.5KW
Washing liquid Consumption	50ml/car
Water wax consumption	50ml/car, Controllable
Applicable vehicle type	car, van, commercial vehicle
Water pressure requirements	1.4-3kgs tap-water pressure; 6-minute diameter water pipe flow >40L/min
Rail	2pcs (6m)
Framework	1 set
Washing pressure	30-50KG
Standard car wash mode	●
Washing Quantity count	●
Fine car Wash Mode	●
Operation permission setting	●
Fully automatic car wash mode	●
Fault self-test function	●
LED indicating system	●
Mirror cleaning	●
Automatic liquid proportioning system	●
One click antifreeze system	●
Chassis tire washing function	●
Oil free function	●
Intelligent three-dimensional detection system	●
Multi liquid reuse function	●
Self-guided parking system	●
Safety alarm function	●
Digital safety anti-collision system	●
Automatic standby function	●
360 degrees rotary washing	●
Hot dip galvanized frame	●
Washing Detergent	●

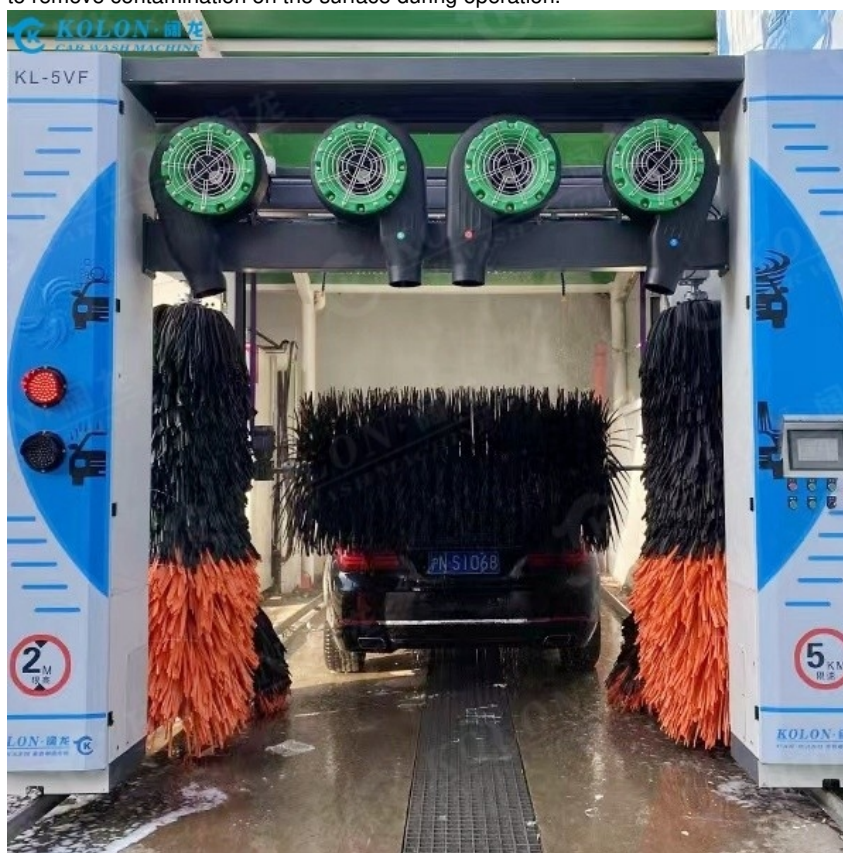
Operation console	•
Highlight and dazzle color system (dazzle color type)	•
Leakage protector	•
Water wax coated function	•
Warning system	•
Magic Color Shampoo	•
Voice warning system	•
Built-in automatic air drying	•
Soft water spray	•
Controller	•
Function Equipped	Chassis washing
	Wheel washing
	soft touch car wash machine with 5 brushes
	High precision low foam water wax 2-in-1 ratio function
	Powerful air drying

Products Description:

Product Overview

Automatic foam spraying rollover car wash machine

The KL-5VF car wash equipment features high-pressure water system and can clean deep stains to meet different customer requirements. This soft touch car wash machine utilizes soft brushes, which can quickly rotate and move in various directions to remove contamination on the surface during operation.



Details:

Air-dry power 12kw(4PCS * 3KW)Siemens motor
waterproof,dustproof and shakeproof motor and reducer is Siemens brand.It is very durable and energy saving.



rotary motor(galvanizing process,rustless)






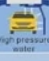

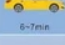
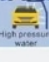
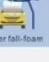
moving moter



fixed type or move up and down air dryer
options available

The brushes are gentle enough to protect the paint. It can completely wash the car with the use of automobile detergent. The brushes will rotate automatically to shake off the water and impurities at the end of washing.



Car Wash Process										
	Step 1	Step 2	Step 3	Step 4	Step 5	Step 6	Step 7	Step 8	Step 9	Time
Mode 1	 Wipe-free foam	 High pressure water	 Wax	 Air dry						 2.5-3.5min
Mode 2	 Wipe-free foam	 High pressure water	 Normal foam	 High pressure water	 Wax	 Air dry				 3.5-4.5min
Mode 3	 Wipe-free foam	 High pressure water	 Normal foam	 High pressure water	 Water fall-foam	 High pressure water	 Wax	 Air dry		 5-7min
Mode 4	 High pressure water	 Wipe-free foam	 High pressure water	 Normal foam	 High pressure water	 Water fall-foam	 High pressure water	 Wax	 Air dry	 8-10min
Model 5.....										
Model 6.....										
You can include any activities in any mode as per your willing										

Using a brush car washer can provide several benefits for your car's appearance and overall maintenance. Here are some key advantages:

Efficient Cleaning: A brush car washer can efficiently remove dirt, grime, and debris from the surface of your car. The bristles of the brush can reach into crevices and hard-to-reach areas, ensuring a thorough cleaning.

Gentle on Paint: High-quality brush car washers are designed with soft bristles that are gentle on your car's paintwork. They minimize the risk of scratching or damaging the exterior surface while still effectively removing dirt.

Time-Saving: Compared to manual washing with a sponge or cloth, a brush car washer allows for quicker and more efficient cleaning. The large brush surface area covers more space with each pass, reducing the time required to clean the entire vehicle.

Versatility: Brush car washers are versatile tools that can be used on various parts of your car, including the body, windows, wheels, and tires. They often come with adjustable handles or extensions, allowing you to reach different areas easily.

Water Conservation: Some brush car washers are designed to be used with a waterless or low-water cleaning solution. This helps conserve water compared to traditional hose-and-bucket methods, making it an environmentally friendly option.

Convenience: Brush car washers are typically lightweight and easy to handle, making the cleaning process more convenient. They are also portable, allowing you to wash your car at home or on the go.

Cost-Effective: Investing in a brush car washer can save you money in the long run. Regularly cleaning your car helps prevent the buildup of dirt, grime, and corrosive substances that can damage the paint and finish. By maintaining your car's appearance, you may reduce the need for expensive detailing or repainting services.

Product packaging



FAQ

Q: Are your car wash machine trader or manufacturer?

A: Yes, we are the car wash machines manufacturer in china. Our brand is Kolonwash. So we have the competitive price, and could provide the spare parts at any time.

Q: What types car wash machines can you produce?

A: We can produce the rollover car wash machine, tunnel car wash machine, touchless car wash machine. Besides, could be customized according to your request.

Q: Can the color and appearance be customized?

A: Yes, of course, they could be customized, just tell me what color you need, and the drawing of the appearance, we could do according to your request.

Q: Can I put my brand name on machine instead of your brand name?

A: Yes, we could stick your brand name on the machines according to your request.

Q: What is the delivery time?

A: Our lead time is 10-15 days once get the advanced payment , according to which type you need.

Q: What about the foundation? How long will it take?

A: We could provide the drawing of the foundation, it needs around 5 days.

Q: How to install the machine? And how to do daily maintenance?

A: We could provide the installation drawing and guided installation video. We could provide the maintenance manual to you.

Q: How about the warranty time and sales-after service?

A: Our machine warranty time: 3 years (50000 times), in warranty time, if the machine have any question, we could provide the parts free of charge.

Q: How to contact you?

A:Whatsapp/Mb.: +86-18964350873 Email: zoe@koloncarwashing.com ; +86-17765180874(WhatsApp, Wechat)
cici@koloncarwashing.com



Shanghai Kuolong Cleaning Machinery Co. Ltd.



+86-17765180874



cici@koloncarwashing.com



automaticcarwashing.com

1778 Huateng Road, Qingpu District, Shanghai, 201708, China